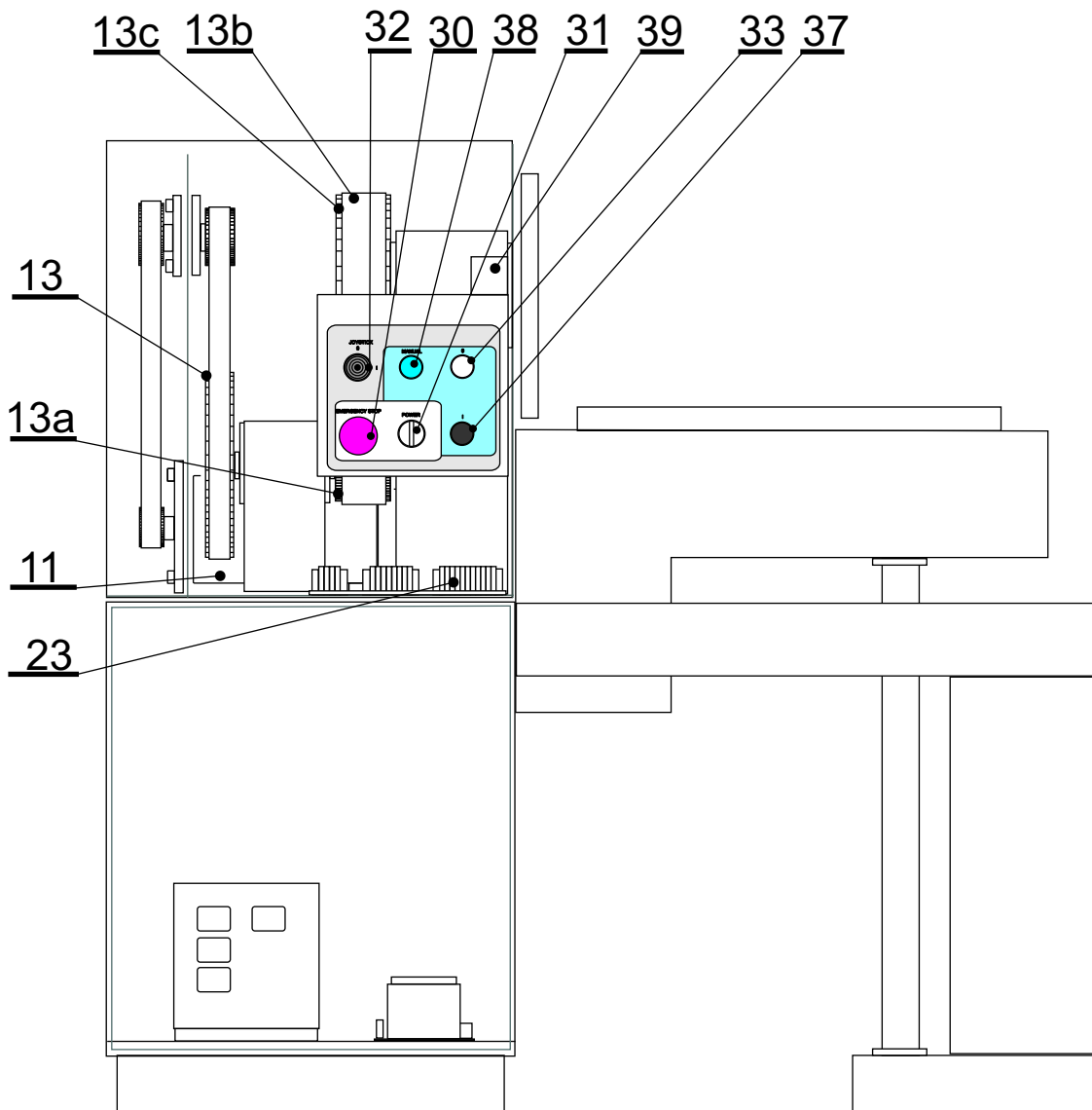




# SPARE PARTS ERN 150G

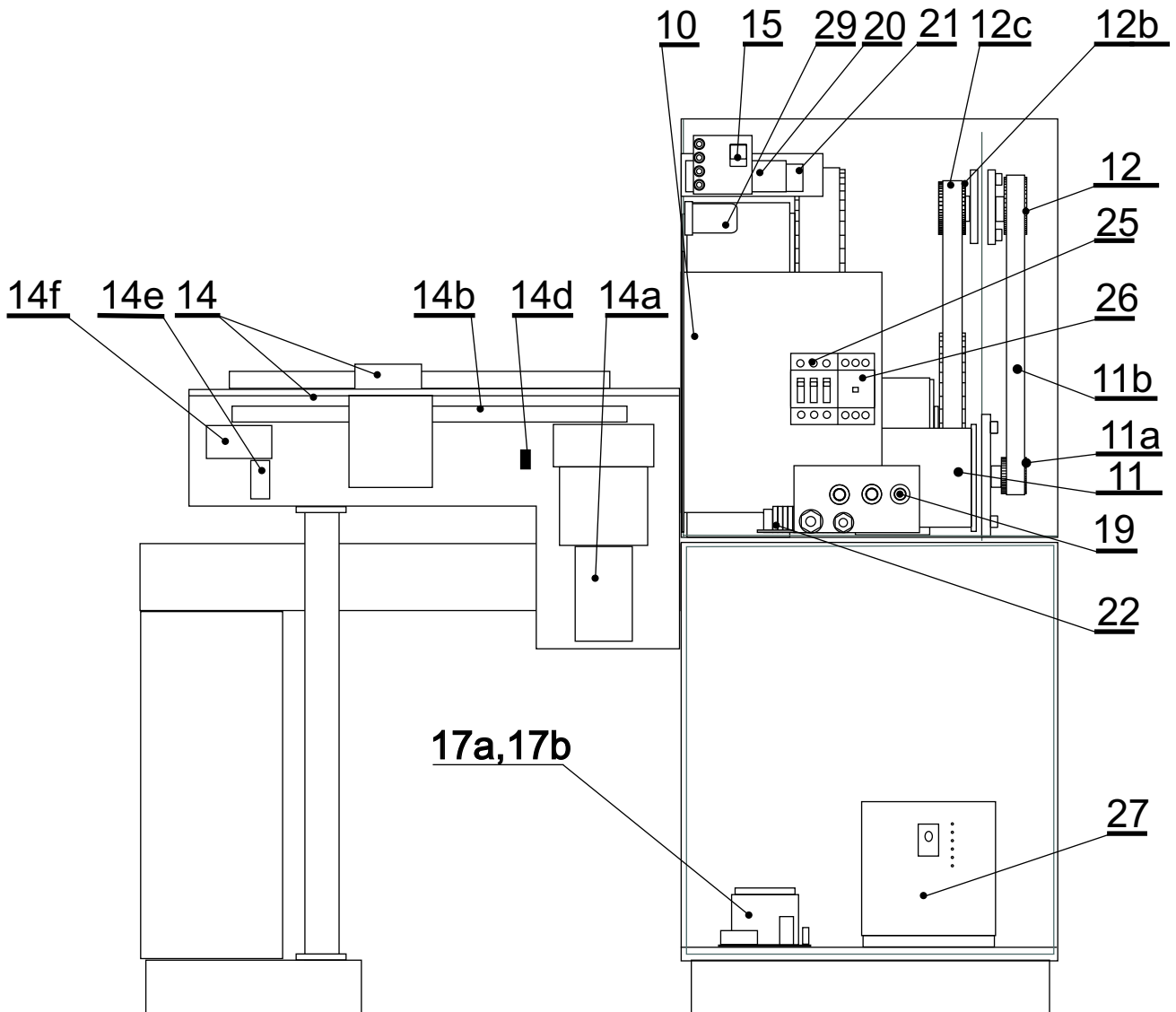


- 11. Servomotor
- 13. Timing gear
- 13a. Timing gear
- 13b. Timing belt
- 13c. Timing gear
- 23. Connector
- 30. Emergency stop
- 31. Stand - by switch
- 32. Joystick
- 33. Start - button
- 37. Stop - button
- 38. Manual - button
- 39. Opto sensor

- TGT5 -1350-30-560
- 80-8M-30/6A
- 40-8M-50/6F
- 8M - 880 -50GT
- 80-8M-50/10A
- TA 048 68
- TA 048 72
- TA 048 74
- TA 048 76
- TA 026 41
- TA 026 42
- TA 026 43
- QMT42VN6FF500 - 1000



# SPARE PARTS ERN 150G

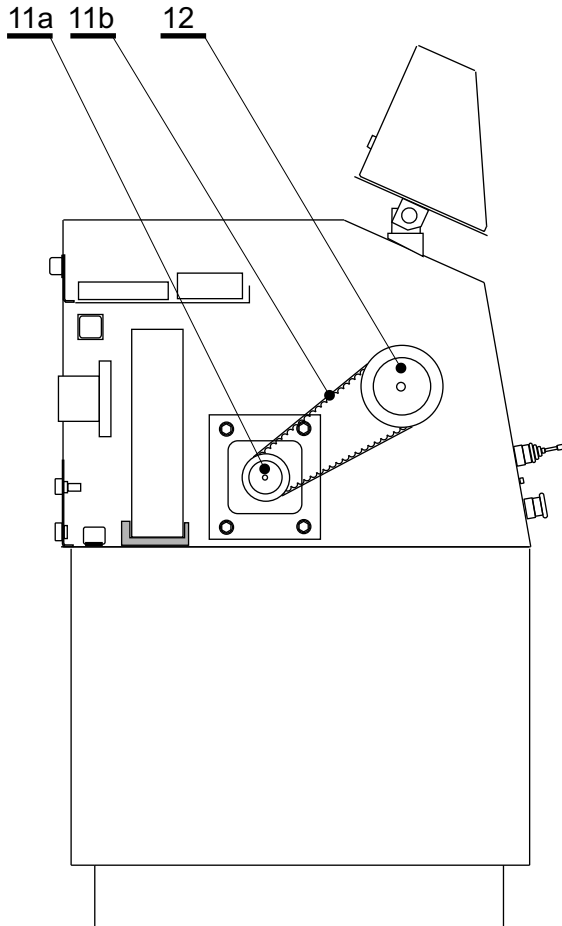


- |                         |                             |                        |                    |
|-------------------------|-----------------------------|------------------------|--------------------|
| 10. AC servo amplifier  | Servostar 712               | 20. Servo power supply | TK 000 56 01       |
| 11. Servomotor          | TGT5-1350-30-560 BS1        | 21. Servo driver       | TGA-24-9/20        |
| 11a. Timing gear        | 30-5MR-25/6F                | 22. Connector          | TA 048 70          |
| 11b. Timing belt        | 5MR-700-25 GT               | 25. Circuit breaker    | LPN-16C-3          |
| 12. Timing gear         | 60-5MR-25/6W                | 26. Relay switch       | RSI-25-40-A230     |
| 12b. Timing gear        | 32-8M-30/6F                 | 27. Back - UPS         | Smart UPS SUA 750I |
| 12c. Timing belt        | 8M-880-30GT                 | 29. Relay              | RP 700 PC/230V3P   |
| 14. Wire guide unit     | NB SGL35A- cart             |                        |                    |
|                         | NB 00133 932-guide          |                        |                    |
| 14a. Servomotor         | TGH3-0160-12-24/T1BK-2M     |                        |                    |
| 14b. Timing belt        | 32T10                       |                        |                    |
| 14d. Microswitch plate  | TK 0 057                    |                        |                    |
| 14e. Switch             | XCK3 212 1G11               |                        |                    |
| 14f. Ball bearing       | 6003 2ZR                    |                        |                    |
| 15. Connector for pedal | TA 026 44                   |                        |                    |
| 17a. Power supply unit  | TK 000 36.00 - ST 106 -125W |                        |                    |
| 17b. Power supply unit  | TK 000 36.00 - ST 107- 150W |                        |                    |
| 19. Fuse case           | SI-HA 125000                |                        |                    |



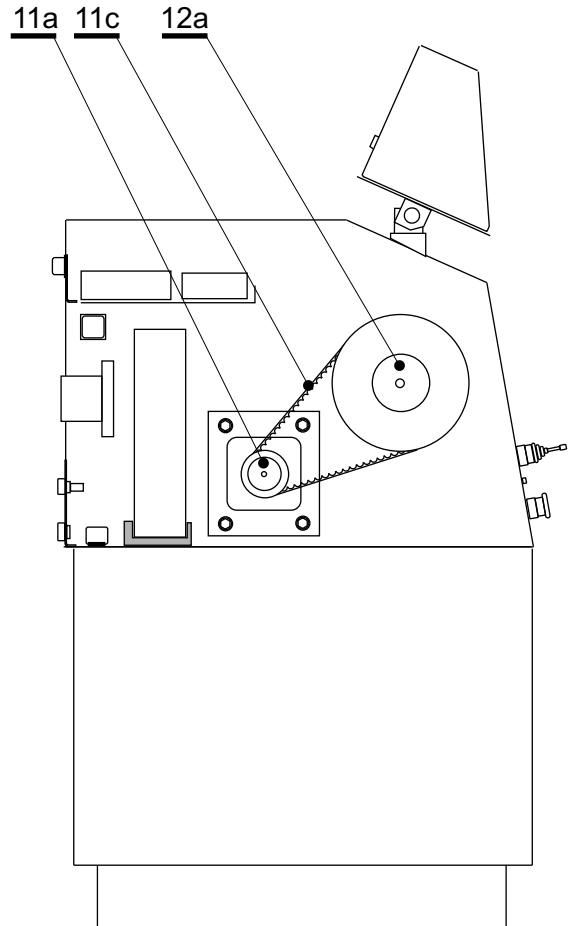
# SPARE PARTS ERN 150G

GEAR 300 rpm



- 11a. Timing gear
- 11b. Timing belt
- 12. Timing gear

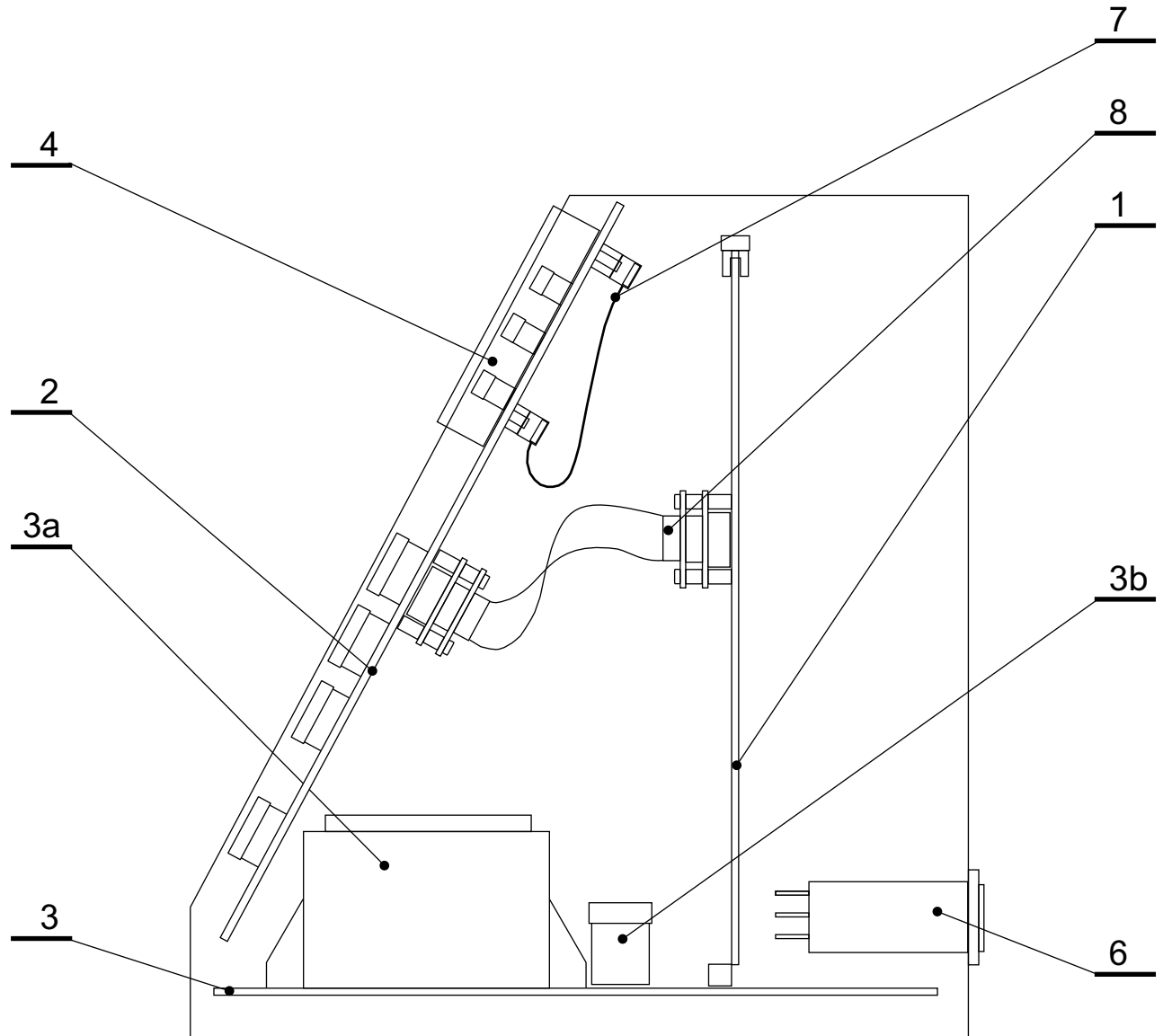
GEAR 150 rpm



- 30-5MR-25/6F
- 5MR-700-25 GT
- 5MR-900-25 GT
- 60-5MR-25/6W
- 120-5MR-25/6W



# SPARE PARTS ERN 150G



- |                                |                      |
|--------------------------------|----------------------|
| 1. PCB 1.                      | TK 000 50 - 02       |
| 2. PCB with keyboard           | TK 000 60 - 01       |
| 3. Backplane                   | TK 000 51 - 04       |
| 3a. Mains transformer          | TRZ 007/ST 39 - 01   |
| 3b. Fuse for bluetooth adapter | 160mA/250V           |
| 4. Display                     | PLANAR EL.240.128.45 |
| 6. Mains filter                | ETI 39.19.160        |
| 7. Connector cable - display   | TA 032 00            |
| 8. Connector cable -RS 232     | TA 032 01            |